



Kurobe Gorge Railway  
Mascot Character  
Kurobe

55th ANNIVERSARY

GO 55<sup>th</sup>!

GO!



TOROKKO!



Kurobe Gorge Railway <Movie>



Dencha

Explore Japan's deepest V-shaped gorge — accessible only by the Torokko Electric Train. Experience the wonders of nature aboard a small Torokko Electric Train! Enjoy a roughly two hours round trip journey from Unazuki Station to Nekomata Station.



Unazuki Station

**UNAZUKI**  
Elevation (224m)



Shin-Yamabiko ("Mountain Echo Tree Spirit") Bridge



Lake Unazuki·Komen Bridge

Shin-Yamabiko Bridge  
Yamabiko Bridge  
Unazuki Dam  
Yanagibashi  
Elevation (265m)  
No boarding or alighting allowed



Yanagibashi Station·Shin-Yanagawara Power Plant

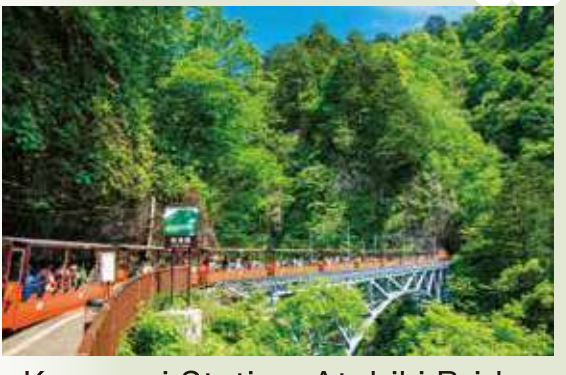


Hotokeishi ("Stone Buddha")

Moriishi  
Elevation (309m)  
No boarding or alighting allowed

**KURONAGI**  
Elevation (326m)

From Unazuki Station around 25 minutes



Kuronagi Station·Atobiki Bridge  
\* The Atobiki Bridge cannot be crossed on foot.



Dashidaira Dam

Atobiki Bridge  
Kuronagi River

Sasadaira  
Elevation (327m)  
No boarding or alighting allowed



Dashiroppo

Dashidaira  
No boarding or alighting allowed

**NEKOMATA**  
Elevation (358m)

From Unazuki Station around 50 minutes



Nekomata Station



My job is to welcome guests to Nekomata Station!

Due to the effects of the Noto Peninsula Earthquake, service operates as a turnaround up to "Nekomata Station" until September 30.

Under Construction To Kanetsuri, Keyakidaira

**PREMIUM**  
Special for a limited time only! You can experience Nekomata Station.

"Nekomata Station" is the only station in Japan with "neko" (cat) in its name. Normally reserved for workers, the station is not open to the public, but for a limited time, you can board and alight here until the full line reopens. Enjoy the breathtaking view from the Nekomata observation deck. Take a premium shot with the special photo frame.



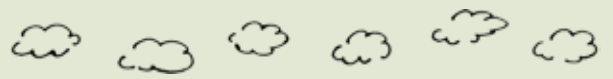
Nekomata Station Platform



Nekomata Observation Deck



Photo Frame



# Guide to the Area Around Unazuki Station



Right in front of  
Unazuki Station

## Kurobe River Electric Memorial Hall

Discover the charm of the Kurobe region and the history of its hydroelectric development through multimedia presentations and 3D models. <Opening Hours: 7:30 AM – 6:00 PM>



1 minute one way  
from Unazuki Station

## Torokko Plaza

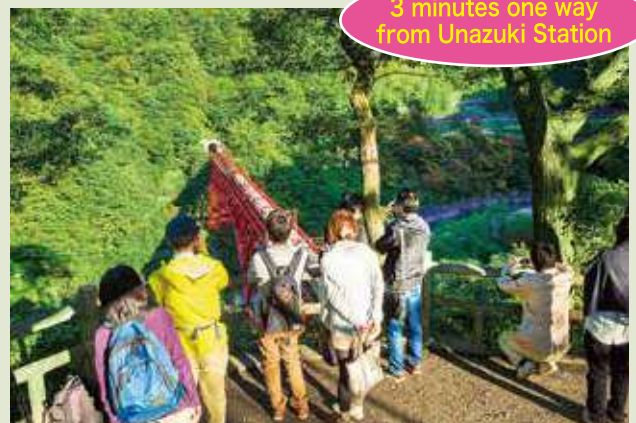
A retro-style locomotive with a boxy shape is on display, perfect for commemorative photos.



5 minutes one way  
from Unazuki Station

## Yamabiko Bridge

This former railway bridge was once used by the Torokko Electric Trains. From here, you can enjoy views of the Shin-Yamabiko Bridge—where the trains now run—along with the stunning natural beauty of the gorge.



3 minutes one way  
from Unazuki Station

## Yamabiko Observation Platform

Perched directly above the Shin-Yamabiko Bridge, it's the perfect spot for capturing photos of the Torokko Electric Trains.

# Timetable

## April 20 – August 31

Passenger Train Type	【Departure from Unazuki】			Turnaround Service	【Arrival at Unazuki】		
	Depart Unazuki	Depart Kuronagi	Arrive Nekomata		Depart Nekomata	Depart Kuronagi	Arrive Unazuki
● R	8:17	8:41	9:02	⇔	9:24	9:52	10:17
● R	9:00	9:24	9:44	⇔	10:09	10:36	10:59
● R	9:42	10:06	10:28	⇔	10:51	11:16	11:41
●	10:22	10:48	11:11	⇔	11:33	11:58	12:23
● R	11:06	11:30	11:52	⇔	12:15	12:39	13:04
● R	11:48	12:12	12:34	⇔	12:57	13:21	13:46
● R	12:28	12:53	13:16	⇔	13:39	14:04	14:28
●	13:11	13:35	13:58	⇔	14:22	14:46	15:10
● R	13:51	14:17	14:43	⇔	15:06	15:29	15:54
● R	14:33	14:59	15:25	⇔	15:48	16:12	16:35
● R	15:19	15:43	16:07	⇔	16:30	16:52	17:16

•Unazuki to Nekomata : Including sightseeing and a restroom break at Nekomata, the total travel time is approximately 120 minutes round trip.

•You will ride in the same passenger trains for both the outbound and return journeys.

- All trains operate on fixed seats, and all passengers will be guaranteed seats.
- You cannot reserve a seat from Kuronagi station.
- All trains are non-smoking.
- There are no restrooms on the train. Please use the restroom before riding the train.
- Pets are not allowed on the train.

### Legend

● ...Regular passenger trains (open-air)

R ...Relax passenger trains (with windows)

● R ...Regular + Relax passenger trains

\*An additional fee of ¥600 is required for the Relax passenger trains.

The timetable from September 1 onward will be announced by early July. Please check the website for details.

## Fares (Round Trip)

Operation period: April 20 – November 30

### April 20 – September 30

<b>Unazuki ⇄ Kuronagi</b>	<b>Adult</b> ¥1,660	<b>Child</b> ¥840
<b>Unazuki ⇄ Nekomata</b> (Turnaround Service)	<b>Adult</b> ¥2,820	<b>Child</b> ¥1,420

After a 20 minutes break,  
passengers reboard the same train  
for the return trip.

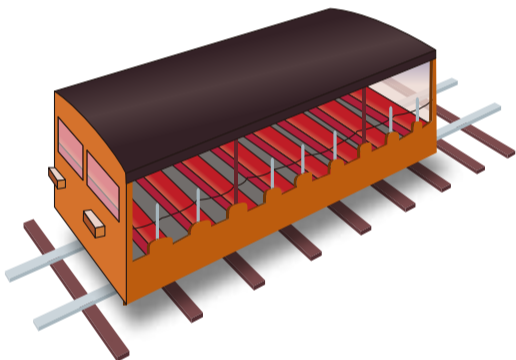
Child (from 6 to 11 years of age)

The operating section from October 1 onward will be announced by early July.  
Please check the website for details.

## Passenger Train Guide

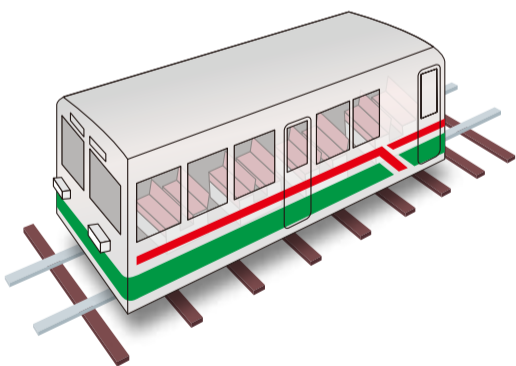
(There is no air-conditioning facility in the passenger trains)

### Regular passenger trains (open-air)



### Relax passenger trains (with windows) ¥600

Relax passenger trains require a train ticket for each use.



## Kurobe Gorge Audio Guide



The broadcast along the line of Torokko Train can be translated by the "Omotenashi Guide App". Please enjoy the in-car broadcast along the train trip.

\ Download the app here /

OMOTENASHI GUIDE 



# Ticket Reservations and Sales

《Less than 15 people》

## Reservations

- Reservations can be made via the website, by phone, or at the Unazuki Station ticket counter.
  - Reservations can be made from three months before the travel date until 3:00 PM on the day before.  
(until 4:30 PM at the Unazuki Station ticket counter)
- Reservations open on April 1.

## Same-day Tickets

Available at the Unazuki Station ticket counter starting from 7:40 AM.

# Clothing Advice

The weather in the gorge can change quickly, so bringing warm clothing is recommended. A hat and comfortable walking shoes will also make activities more enjoyable.

**On rainy days, there's a chance your clothes may get wet, so we recommend wearing rain gear (a raincoat).**

**Rain gear is also available for purchase at the station shop.**

# Food & Souvenir Shop (Unazuki Station)

We offer a variety of options including bento lunch boxes, rice bowls, noodles, and souvenirs.

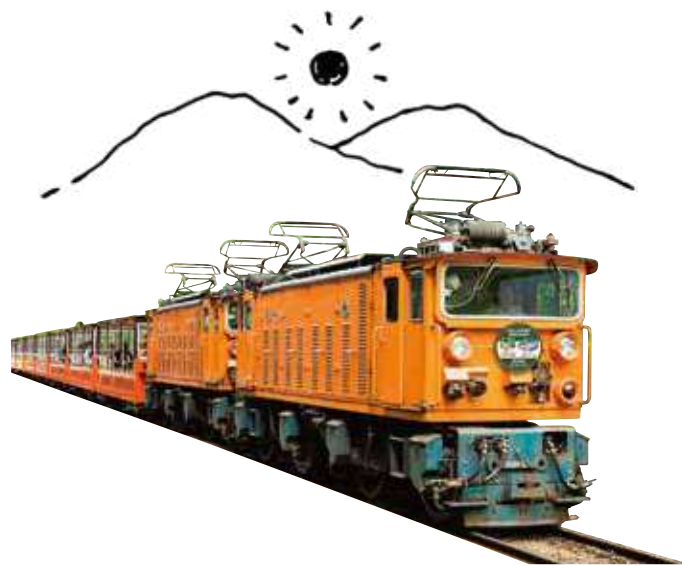
# Boarding Procedure

Please arrive approximately 20 minutes before departure to complete the boarding procedure.



# The Origins of the Kurobe Gorge Railway

The history of the Kurobe Gorge Railway began alongside Japan's hydroelectric power development. Construction of the railway began in 1923 (Taisho 12), and the full 20.1 km line to the terminus at Keyakidaira was completed in 1937 (Showa 12). Later, in 1953 (Showa 28), the railway was granted a license under the Local Railway Act and began operating as a sightseeing railway. Today, affectionately known as the "Torokko Electric Train," it is a favorite among tourists, including many from overseas.



No.1.V-shaped Gorge in Japan



黒部峡谷トロッコ電車

©Reservations/Inquiries

## Kurobe Gorge Railway Customer Center

Mailing Address : 11 Kurobe Kyokokuguchi, Kurobe City,  
Toyama, Japan 938-0293

TEL 81-765-62-1011 FAX 81-765-62-1724 (from outside Japan)

TEL 0765-62-1011 FAX 0765-62-1724 (from inside Japan)